

Quick Start

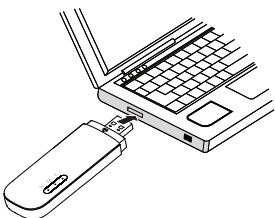
Thank you for choosing the LTE Wingle. The LTE Wingle allows you to access a wireless network at high speed.

Note:

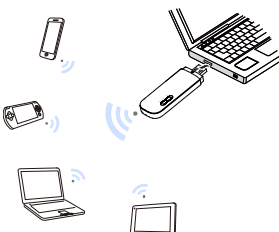
This guide briefly describes the appearance of the LTE Wingle and the procedures for using the LTE Wingle. For details about how to set the management parameters, see help information on the web management page.

Connection Scenarios

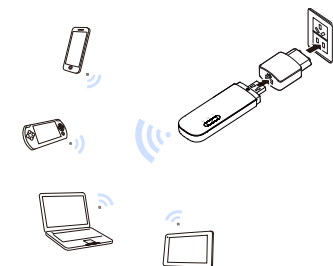
Scenario 1: One-device Internet access using computer



Scenario 2: Multi-device Internet access using Wi-Fi (connected to a computer)

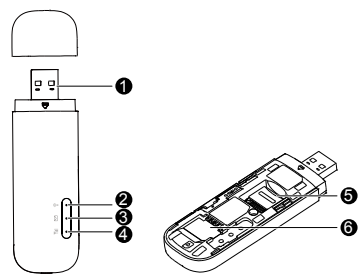


Scenario 3: Multi-device Internet access using Wi-Fi (connected to the power adapter)



Getting to Know Your LTE Wingle

The following figure shows the LTE Wingle. It is provided only for your reference. The actual product may be different.



① USB connector

It connects the LTE Wingle to a computer.

② Wi-Fi indicator

It indicates the status of a Wi-Fi network.

- Steady green: The Wi-Fi function is turned on.
- Off: The Wi-Fi function is turned off or fails, or the LTE Wingle has been removed.

③ SMS indicator

It indicates the status of an SMS.

- Steady green: There are unread messages in your inbox.
- Blinking green once every 2s: The message storage is full.
- Off: The LTE Wingle is powered off, there are no unread messages.

④ 2G/3G/LTE indicator

It indicates the LTE Wingle's status.

- Blinking green twice every 2s: The LTE Wingle is powered on.
- Blinking green once every 0.2s: The software of the LTE Wingle is being upgraded.
- Blinking green once every 2s: The LTE Wingle is registered with a 2G network.
- Steady green: The LTE Wingle is connected to a 2G network.
- Blinking blue once every 2s: The LTE Wingle is registered with a 3G network.
- Steady blue: The LTE Wingle is connected to a 3G network.
- Blinking cyan once every 2s: The LTE Wingle is registered with a LTE network.
- Steady cyan: The LTE Wingle is connected to a 3G+/LTE network.
- Off: The LTE Wingle is removed.

⑤ microSD card slot

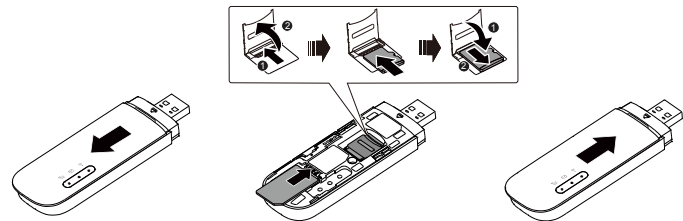
It holds a microSD card.

⑥ SIM card slot

It holds a Subscriber Identity Module (SIM) card.

Getting Started

1. Slide the cover to remove it from the LTE Wingle.
2. Insert the SIM card and the microSD card into the corresponding card slots, as shown in the following figure.
3. Replace the cover and slide it into place.



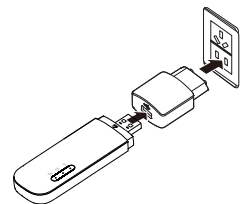
Note:

- The microSD card is an optional accessory. If it is not provided in the package, you can buy one yourself.
- Ensure that the beveled edge of the SIM card is properly aligned with that of the SIM card slot and the microSD card is inserted according to the direction as labeled on the microSD card slot.
- Do not remove the microSD or SIM card when the card is in use. Otherwise, the card as well as your LTE Wingle may get damaged and the data stored on the card may be corrupted.
- Do not use any SIM card that is not standard or is incompatible with the LTE Wingle. Otherwise, the card as well as your LTE Wingle may get damaged and the data stored on the card may be corrupted.



Using the Power Adapter

Connect the LTE Wingle to the power adapter's USB port, and connect the power adapter to a power outlet.



Note:

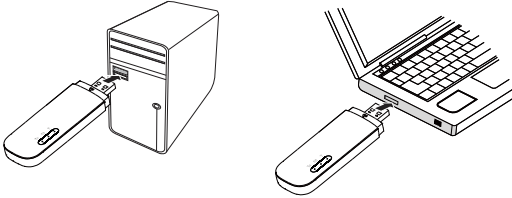
- Only use power adapters compatible with the LTE Wingle and provided by a designated manufacturer (HW-050100xxW: The first x represents U, E, B, A, or J, depending on your region. The second x represents generation number.). For details about the specific adapter model, contact an authorized dealer. Use of an incompatible power adapter or one from an unknown manufacturer may cause the LTE Wingle to malfunction, fail, or could even cause a fire. Such use voids all warranties, whether expressed or implied, on the product.
- The power adapter is an optional accessory. If it is not included in the product package, purchase one separately.

Using Your LTE Wingle

The procedure for installing the management program depends on your computer's operating system. The following sections are based on Windows 7.

Connecting to a Network

1. Connect the LTE Wingle to one of your computer's USB ports.



The installation wizard runs automatically.

2. When the installation is complete, the LTE Wingle's web management page is displayed and the LTE Wingle connects to the network automatically.

Note:

- If the installation wizard does not run automatically, find the **AutoRun.exe** file in the driver path, and double-click the file to run it.
- The default user name and password of the web management page are **admin**.
- If your SIM card's personal identification number (PIN) verification function is enabled, log in to the web management page, and enter and save the PIN.
- If you are not using the default access point name (APN), log in to the web management page, and configure and save the APN settings on the dial-up settings tab.
- When using the LTE Wingle to access a network, do not use other devices to access the network, because doing so may cause conflicts.
- If you are not connected to the network, access <http://192.168.8.1> to check the device status.
- If you cannot access <http://192.168.8.1>, disconnect other network connections, such as an Ethernet or Wireless Fidelity (Wi-Fi) connection, remove and then insert the LTE Wingle, or restart the computer.

Disconnecting from a Network

Remove the LTE Wingle from your computer.

Note:

- By default, the LTE Wingle automatically disconnects from the network if no data is transferred within 10 minutes.
- If you do not need to connect to the network, it is recommended that you remove the LTE Wingle from your computer to reduce data traffic.
- Disconnect the LTE Wingle's data connection through its web management page or the Mobile Wi-Fi application. Before you remove the LTE Wingle, make sure that the data connection has been disconnected.

Setting Up a Wi-Fi Connection

1. Ensure that the LTE Wingle's Wi-Fi function is on.
2. Select **Start > Control Panel > Network and Internet > Network and Sharing Center > Connect to a network**.

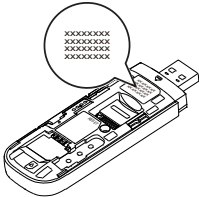
Note:

Before establishing a Wi-Fi connection, ensure that the computer is equipped with a wireless network adapter. If the computer indicates a wireless network connection, the wireless network adapter can be used. Otherwise, verify that your wireless network adapter is working properly.

3. Select the wireless network connection with the LTE Wingle's SSID and click **Connect**.

Note:

- If a security mechanism is enabled for the wireless network connection, enter the correct network key.
- The SSID and the network key are printed on the LTE Wingle, as shown in the following figure.



4. Wait until a wireless network connection icon is displayed in the lower right corner of the computer screen. A wireless network connection is set up.

Accessing the Internet

You can access the Internet after a connection between your LTE Wingle and Wi-Fi device is set up.

Note:

By default, the LTE Wingle automatically disconnects from the Internet when you are roaming.

Example 1: Connecting to a Game Console (for example, PSP) through Wi-Fi

1. On the PSP, turn on the WLAN.
2. Choose **Settings > Network Settings**.
3. Select **Infrastructure Mode**.
4. Select **New Connection**, and enter the connection name.
5. Select **Scan** to search for wireless networks. A list of access points will be displayed on the screen.
6. Select the access point with the LTE Wingle's SSID, and press the ► button on the PSP. Confirm the SSID, and enter the correct wireless network encryption key.
7. Press the ► button to proceed to the next step, and then press the X button to save settings.
8. Select **Test Connection** to test whether the network connection is successful.
9. You can now open the browser and access the network.



Example 2: Connecting to a Tablet Computer (for example, iPad) through Wi-Fi

1. Touch **Settings > WLAN** to turn on WLAN.
2. The tablet computer automatically searches for wireless connections and displays a list of access points.
3. Select the access point with the LTE Wingle's SSID.
4. If required, enter the correct wireless network encryption key, and tap **Join**. (The lock icon indicates that the encryption key is required to connect to this wireless network.)



Note:

Wi-Fi devices, such as an iPhone, iPod touch, PS3 and NDSi, can all access the Internet through the LTE Wingle. For specific operations, refer to the Wi-Fi device's user manual.

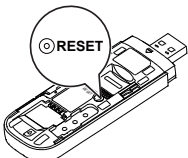
Viewing Service Information

Visit <http://192.168.8.1> to view your service information.

Restoring Factory Defaults

If you are uncertain of which settings you have configured or changed, you can restore the factory defaults that come with the LTE Wingle, and reconfigure the device.

To restore the factory defaults, connect the LTE Wingle to a computer or a power outlet, and press and hold the RESET button for 2 seconds.



Note:

Restoring factory defaults deletes all the device's user-defined settings and restores all the settings on the web management page to their defaults.